

Ultrasol® 30-10-10 Super Foliar

Related Crops

This formula is excellent for foliar application on vegetables, row crops, trees, and turf grass. High urea and very good solubility make this an especially effective foliar fertilizer. Includes micronutrients.

DERIVED FROM:

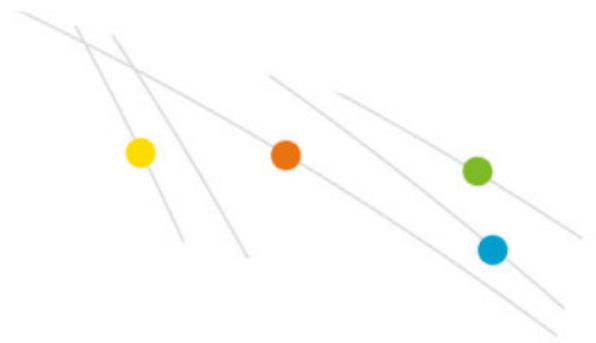
Potassium Nitrate, Urea, Mono Ammonium Phosphate, Iron EDDHA, Iron EDTA, Manganese EDTA, Copper EDTA, Zinc EDTA, Boric Acid, Sodium Molybdate. F1367

POTENTIAL BASICITY:

1100 lbs calcium carbonate equivalent per ton.

Technical information

Total Nitrogen (N):	30%
Ammoniacal Nitrogen:	2.0%
Nitrate Nitrogen:	3.0%
Urea Nitrogen:	25.0%
Available Phosphate (P2O5):	10%
Soluble Potash (K2O):	10%
Sulfur (S) Combined:	1.00%
Boron (B):	0.017%
Copper (Cu):	0.05%
Chelated Copper (Cu):	0.05%



Technical information

Iron (Fe):	0.10%
Chelated Iron (Fe):	0.10%
Manganese (Mn):	0.05%
Chelated Manganese (Mn):	0.05%
Molybdenum (Mo):	0.001%
Zinc (Zn):	0.05%
Chelated Zinc (Zn):	0.05%